



Convergence – Shaping the face of Environmental Monitoring

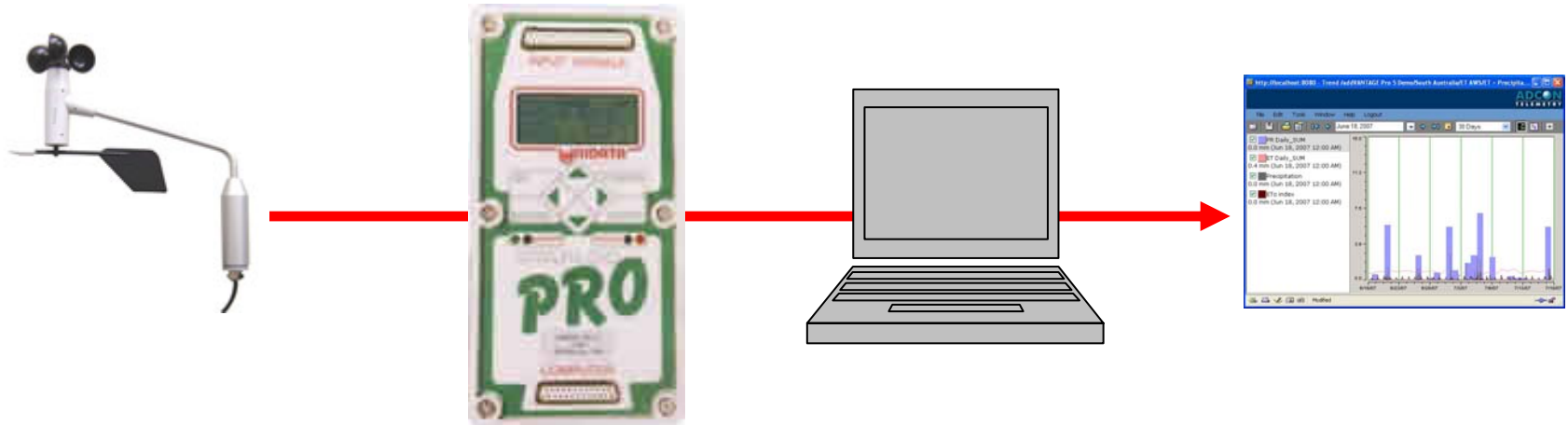
Peter Toome, Adcon Telemetry Australia

» Outline

- **Environmental Monitoring – historical perspective**
- **Convergence – an example from telephony**
- **The IP centric society**

» Environmental Monitoring – traditional approach

Measurement Storage Collection Analysis



» Environmental Monitoring

- **Trends in environmental monitoring**
 - Massive growth in number of sites
 - Explosion in data volumes
- **Impact**
 - Shift from focus on measurement to data collection and management

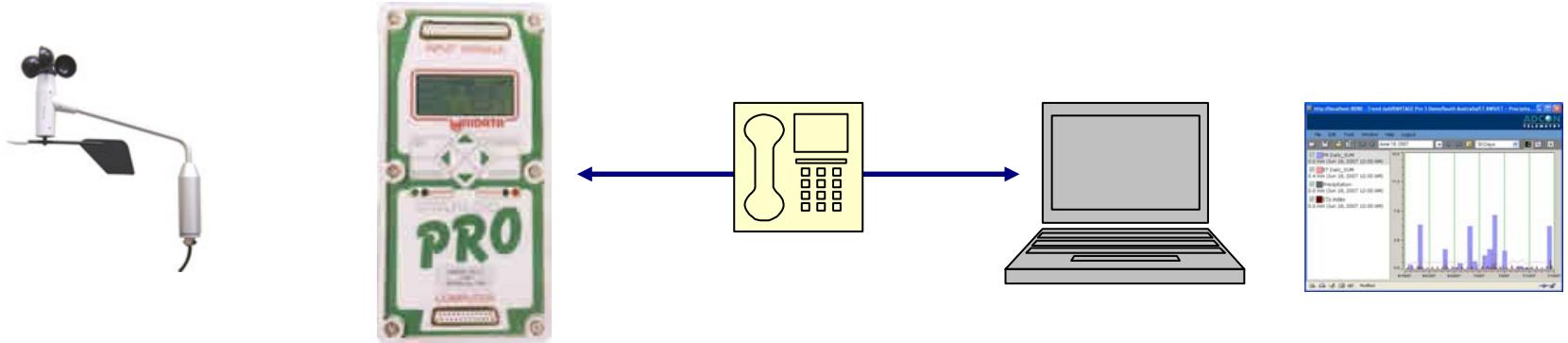
» Environmental Monitoring – evolution

Measurement

Storage

Collection

Analysis

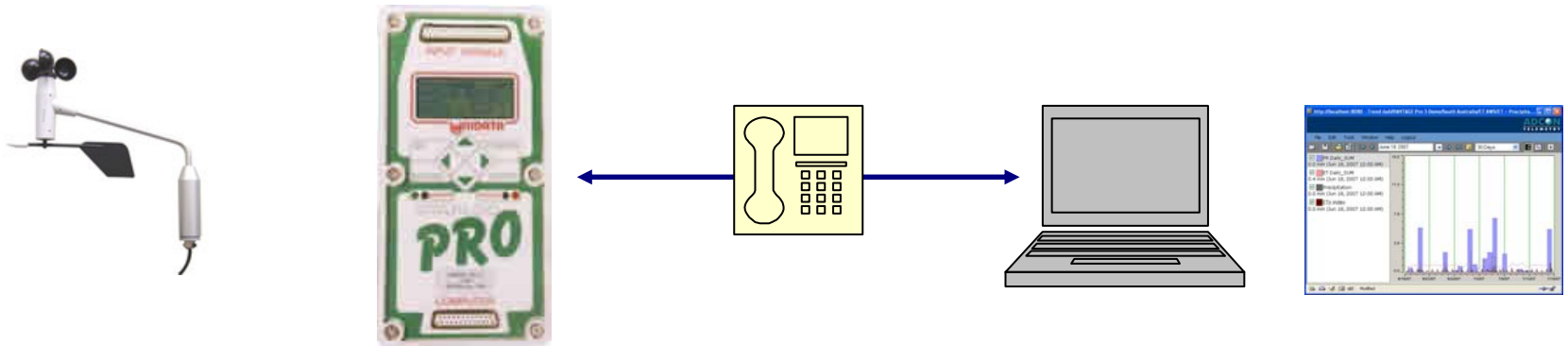


Pull approach

- Establish dial up connection
- Collect data

» Environmental Monitoring – evolution (ctd)

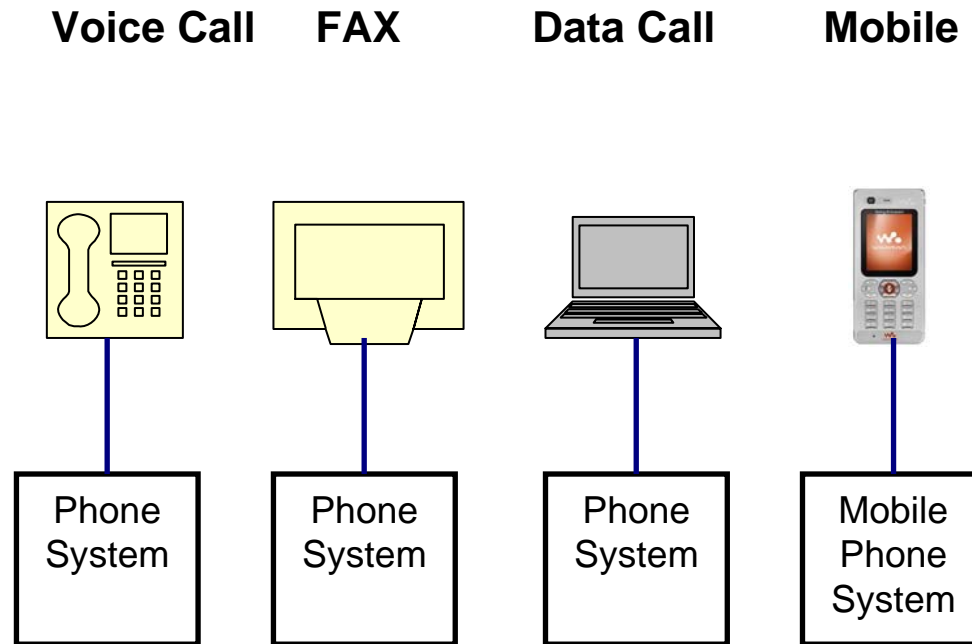
Measurement Storage Collection Analysis



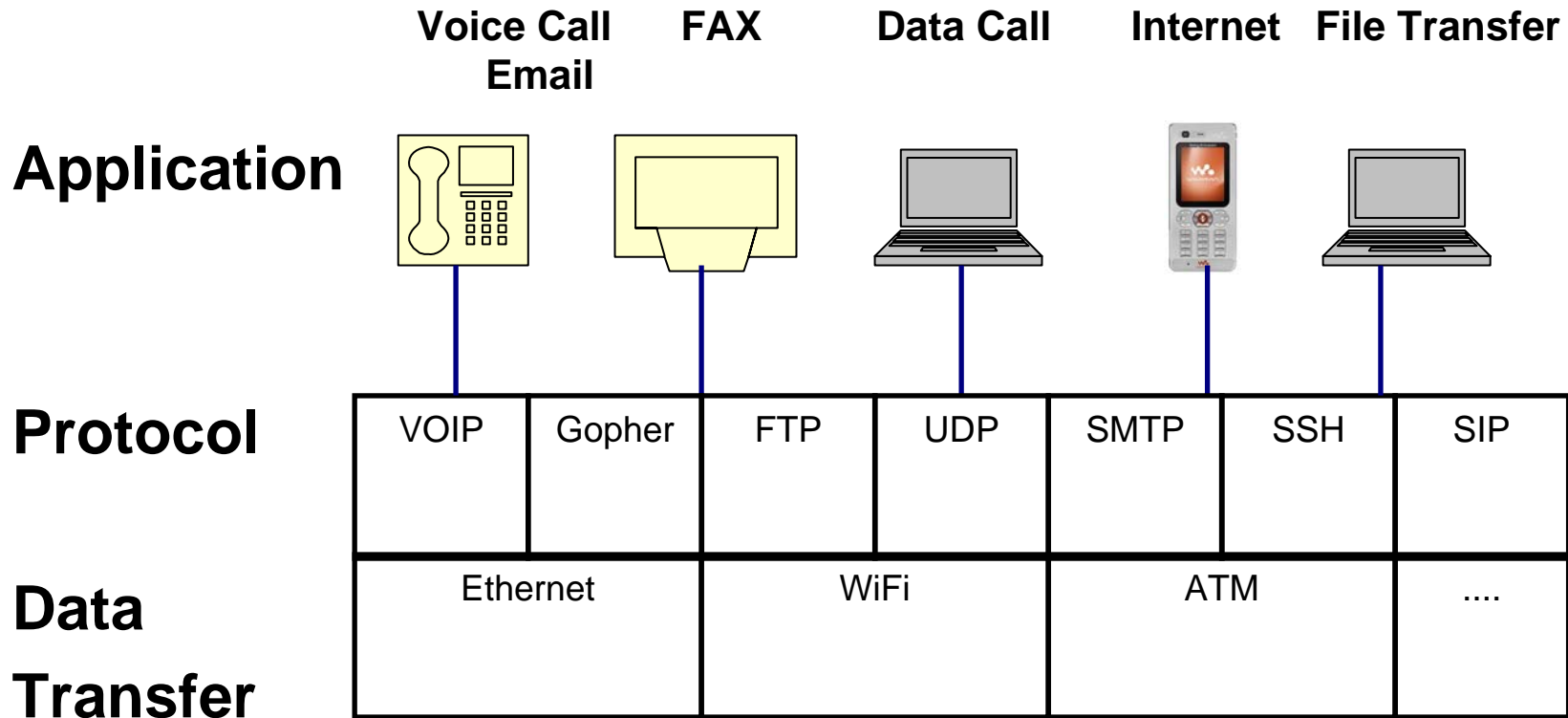
Push approach

- Establish ftp connection
- Push data to FTP/WEB host

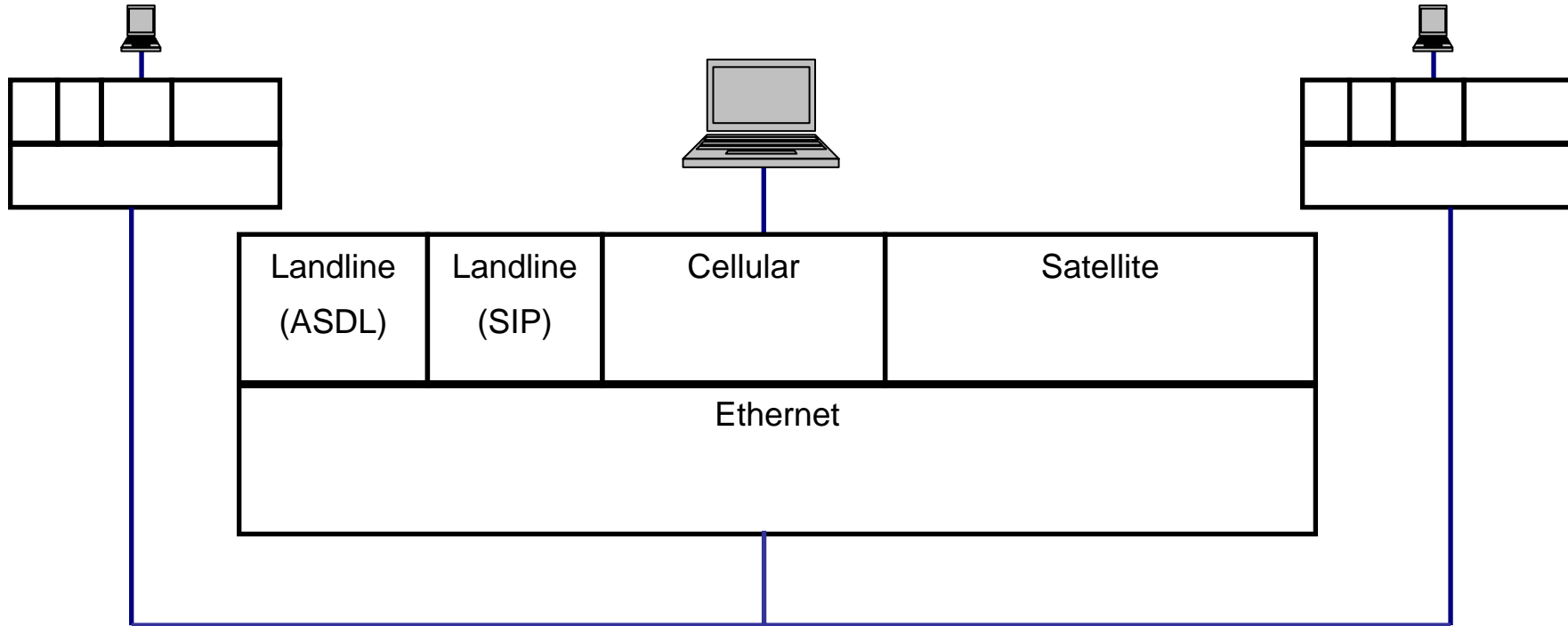
» The old paradigm - Functional Silos



» The new paradigm – protocol based services

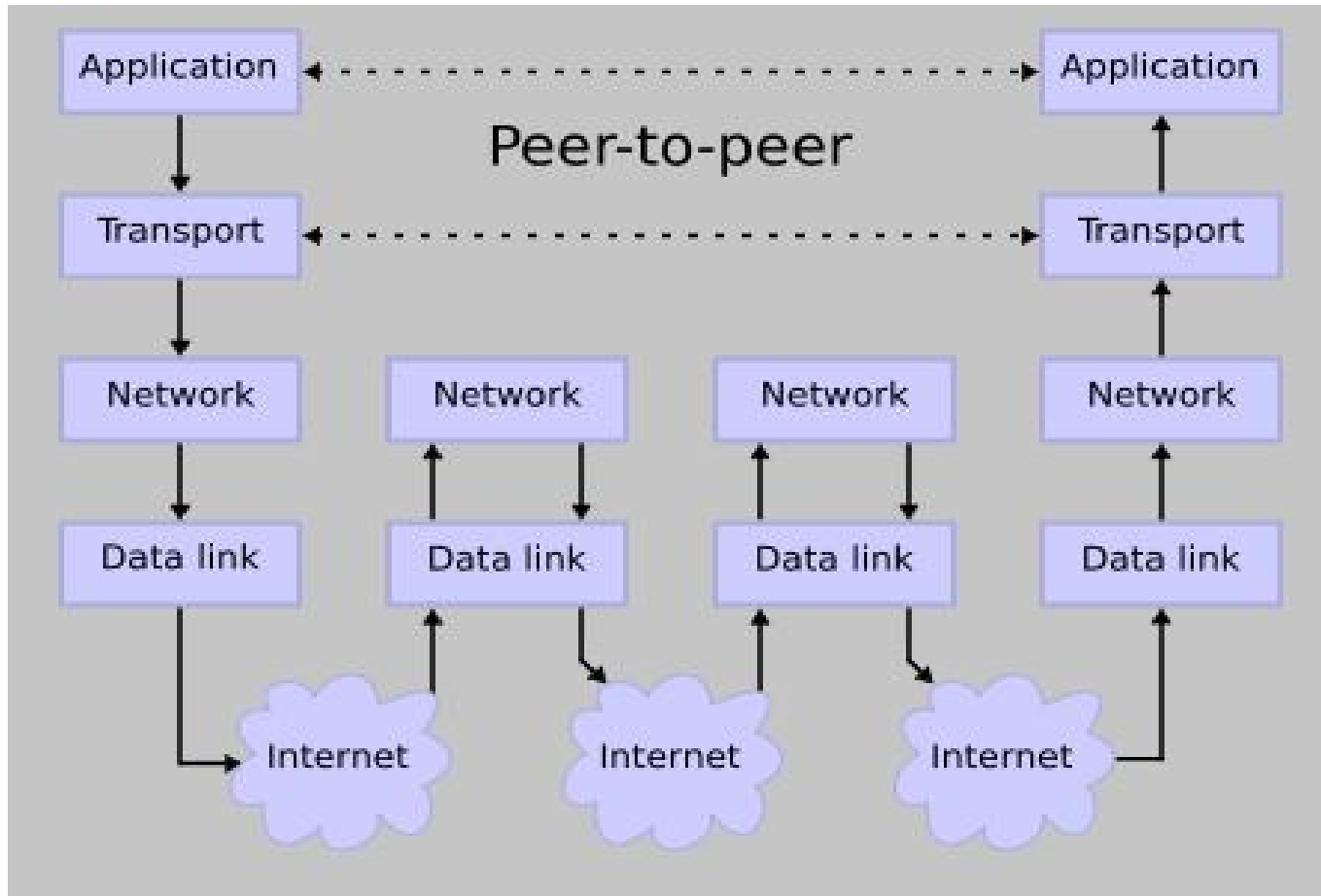


» IP Connection Centred paradigm



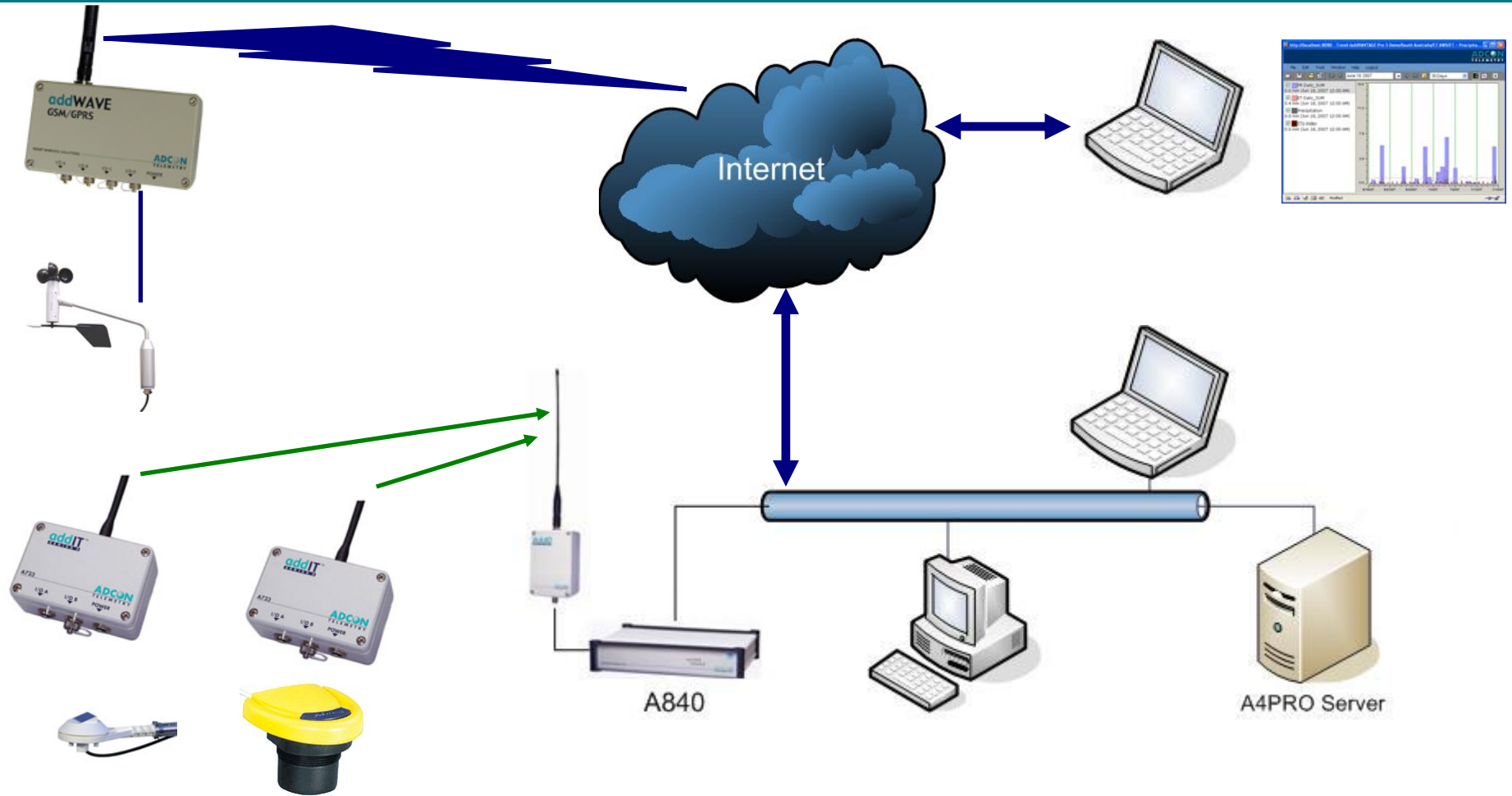
“IP” connections universally available

» Common link in future systems is the connection



Source: Wikipedia http://en.wikipedia.org/wiki/Image:IP_stack_connections.svg

» IP Centric Monitoring Systems



» Sample System

- **“IP” connection between components**
 - Server
 - Data sources
- **Web based configuration**
- **Open protocols wherever possible**
 - XML, HTML

» Links

- **Data sources**

- <http://203.87.125.166:840>
- <http://203.87.125.166:850>
- <http://demo-a850.adcon.at>

- **Servers**

- <http://203.87.125.166:8080>
- <http://demo.adcon.at>



Questions & Feedback